

# Warning horns

## AA Series

G100 IP65  - G75 IP30



TECHNO-LIFTING EQUIPMENT

### SINGLE TONE WARNING HORNS

Generally used in the industrial

#### Characteristics:

- Operation: continuous
- Frequency: 300+350 Hz G100 Series, 50 Hz G75 Series
- Pressure (at 1 meter): 93,5 dB (A), G100 Series, 88 dB (A), G75 Series
- Wall mounted
- IEC/EN60529 protection rating: IP65 G100 Series, IP30 G75 Series
- Terminal type: 2 way terminal bar G100 Series, 3 way terminal (2+T) G75 Series
- G100 Series double insulated

#### G75 Ø 75



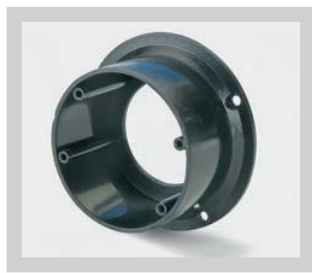
POWER SUPPLY Volt	CONSUMPTION mA	CODE	WEIGHT gr	MIN. PACK QTY.
24 AC	190	G75.24	120	2/12
48 AC	80	G75.48		
110 AC	28	G75.110		
230 AC	20	G75.230		
24 DC	40	G75.24DC		
48 DC	-	G75.48DC		

#### G100 Ø 100



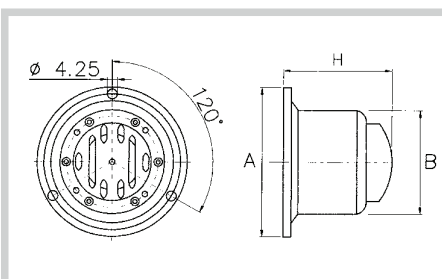
24 AC	415	G100.24	305	2/12
48 AC	210	G100.48		
110 AC	90	G100.110		
230 AC	42	G100.230		

#### BOX



For G75 **11710009**  
For G100 **11710010**

#### DIMENSIONS



	G75	G100
A	Ø 95.5	Ø 120
B	Ø 76.5	Ø 95.5
H	56	58

Overall dimensions include the back box