



MTI Chemical Feed Skids

CHEMICAL FEED PRODUCT INFORMATION:

- Single, Double and Multiple Pump Systems.
- Manufactured out of Marine Grade High Density Polyethylene with 100% U.V. Inhibitor.
- Built in spill containment.
- Chemical flow indication.
- Pressure relief valve.
- Pressure gauge, Pulsation dampener, Calibration column, Pressure switch.
- Socket welded joints to eliminate threaded connections: Multiple Unions for ease of maintenance.
- Custom Control Panels.
- Custom Design to meet specific Application Requirements.

CHEMICAL FEED PRODUCT APPLICATIONS:

- Alum • Ammonia • Caustic • Chemical metering • Chlorination • Flocculants • Fluoridation • Hydrochloric Acid
- Polymers • Potassium Permanganate • Sodium Bisulfite / Bisulfite • Others



CHEMICAL FEED PRODUCT FEATURES:

Chemical Feed Skid Systems are engineered for easy installation and component access. Each skid is factory tested and includes the following standard components:

Pressure Relief Valve protects the system from over-pressurization up to 230 psi. maximum system pressure.

Check Valve Protects the pump and user from backflow.

Flow Indicator Visual indication of chemical movement through the system.

The following optional components are available for specification:

Inlet Y Strainer Recommended for Diaphragm Pump systems.

Calibration Cylinder Confirm pump output under system conditions.

Pulsation Dampener Protect the system components from pulsation/vibrating. Recommended for diaphragm and solenoid pump systems.

Pressure Gauge With Gauge Guard to confirm skid pressure for setting back pressure relief valves.

Flow Verification Sensor Confirms metering pump output is above minimum required.

Dimensions:

- Single Pump Skid: 24" (w) x 65 " (h) x 20" (d).
- Double Pump Skid: 36" (w) x 65" (h) x 20" (d).

Skid Material: Marine Grade High Density Polyethylene with U.V. Inhibitor.

Piping: Customer Specified-PVC Schedule 80, CPVC, other materials available upon request.

Unions: PVC body, schedule 80, Vitcon seals (optional EPDM).

Ball Valves: Vented type ball, True unions, PVC body, PTFE shaft bearing and seats. Viton Seals (optional EPDM).

Pressure Relief Valve: Built-in air release to reduce priming difficulties with metering pumps.

Pressure Gauge With Guard: Liquid filled stainless steel, optional guards available.

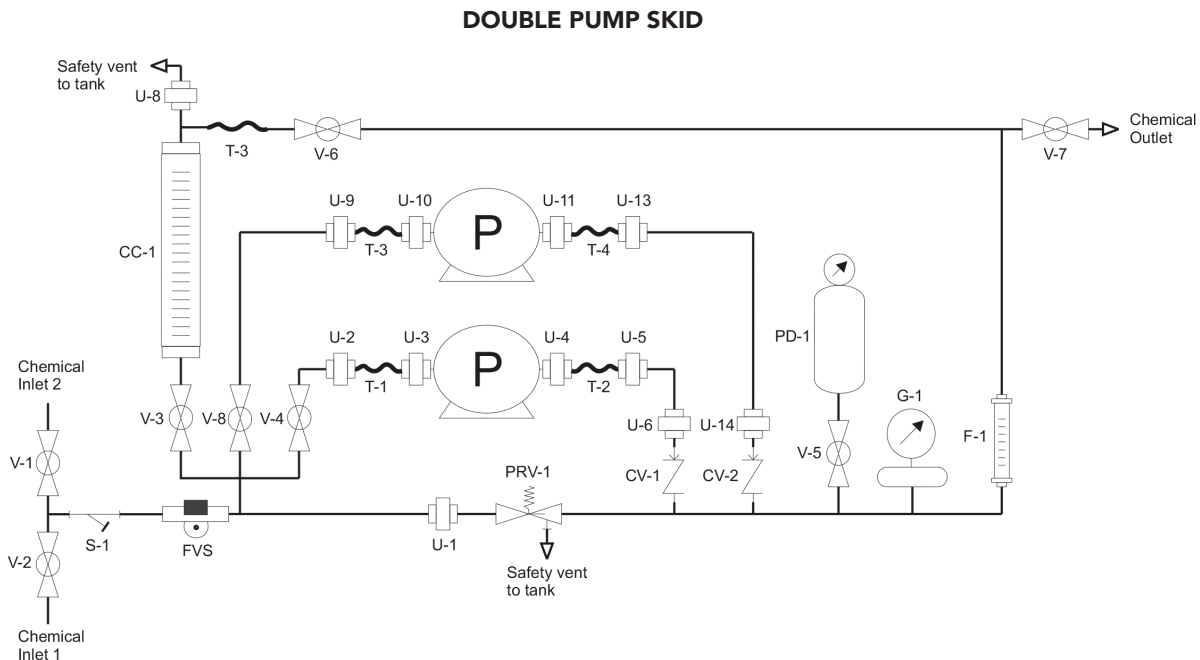
Calibration Column: Accudraw Polypropylene, PVC, Glass, Calibration Cylinders.

Flow Indication: Machined cast acrylic, PVC connection, ceramic ball, polypropylene ball stop, PVC half unions, Viton seals (optional EPDM).

Maximum Working Pressure: 150 psi.

Operating Temperature: 14F to 115F (-10C to 46C).

Control Panel: Specified by Customer. Inquire about Custom Solutions.



Motion Technologies, Inc.

1769 West University Dr.
Suite 182
Tempe, AZ 85281

Phone: 480-303-9155

Email: orders@motiontechnologies.com

www.motiontechnologies.com